

AJ Test Equipment

HYJ3801

General Description

- HYJ3801 AJ test equipment is designed to support all the GPS anti-jamming test requirements.
- HYJ3801 is for the test of susceptibility of GNSS receivers to jamming such as CW, pulse, noise and any interference those we could imagine.
- A modular approach provides for expandability with additional programmable generators independently for GPS L1, L2 or GLONASS L1.
- HYJ3801 is the best solution for testing receiver susceptibility to intentional or unintentional interference which has become a requirement and product differentiator in airborne, automotive, defense and mobile phone applications.



Electrical Specification

ITEM	Specifications	Remarks(Opt.)
Control	External CDU/ Profile setting & Stand Alone Op.	
Interface	Ethernet / RS232	
Output Power Range	-80dBm ~+10dBm	a basis of CW
Power Control Step	1.0dB	
Output VSWR	Max. 2 : 1	
Real Time Clock	Internal	
RF Output	Single Output : GPS L1	GPS L2 GLONASS L1
Jamming	CW, AM, FM, Pulse, C/A code, AWGN, Multi-tone, Sweep CW	
DC Power	AC 220V	
Uniqueness	Multi RF(Programmable RF)	

Jamming Signal Specification

Jamming Signal	Specification	Center Frequency	Remarks(Opt.)
CW	Max. Output Power : +10dBm	1575.42 (±4)MHz	1227.6 (±4)MHz 1602 (±4)MHz
Sweep CW	Sweep Speed : <1us Peak Power : +10dBm	1575.42 (±4)MHz	1227.6 (±4)MHz 1602 (±4)MHz
Multi-tone	Frequency Deviation : Selectable Max. 10EA	1575.42 (±4)MHz	1227.6 (±4)MHz 1602 (±4)MHz
Pulse	Duty Cycle : 10~90%(Random) PRR : 2kHz~4MHz	1575.42MHz	1227.6MHz 1602MHz
FM	Modulation Index, Frequency Deviation : Selectable Arbitrary Signal	1575.42MHz	1227.6MHz 1602MHz
AM	Arbitrary Signal	1575.42MHz	1227.6MHz 1602MHz
C/A Code	PRN : 1~32(Auto Change) Channel Power : 0dBm	1575.42 (±4)MHz	1227.6 (±4)MHz 1602 (±4)MHz
AWGN	Channel Power : 0dBm	1575.42(±10)MHz	1227.6 (±10)MHz 1602 (±10)MHz

Mechanical Specification

ITEM	Specifications	Remarks
Size	19" 2U Rack	
Connector	SMA(TNC) Female	
Display LCD	87.6*26	mm

General

Description	Specification	Remarks
Operating System	External CDU	Desktop, Laptop
Remote Interface	Ethernet/RS232	
External Reference	10MHz	

Ordering information

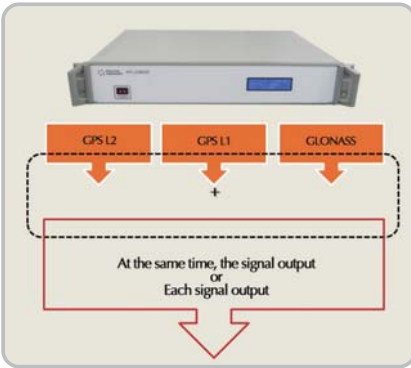
Part Number	Description
HYJ3801	GPS L1 Jamming Signal Generator
Opt.1	GPS L2
Opt.2	GLONASS L1



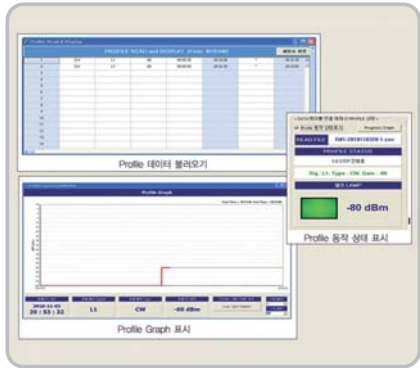
특징

ITEM	Description	Remarks
Multi RFI(Programmable RFI)	3개의 대역으로 재밍신호 동시 송출 또는 각 대역별로 송출 가능함	GPS L2/L1, GLNASS L1 Band
Remote Interface	Ethernet/RS232	
Stand Alone & Profile setting	재밍 시나리오를 이용한 무인 운용	CDU에서 다양한 시나리오 입력 가능
Various Jamming Signal	8 종류의 재밍 신호 생성 - Sweep CW : 1us 이내 조절 가능 - Multi-tone : 최대 10개의 CW 생성 - AM, FM : 임의의 재밍 신호 - etc.	CW, AM, FM, Pulse, C/A code, AWGN, Multi-tone, Sweep CW

Multi RFI



Stand Alone & Profile setting



Various Jamming Signal

